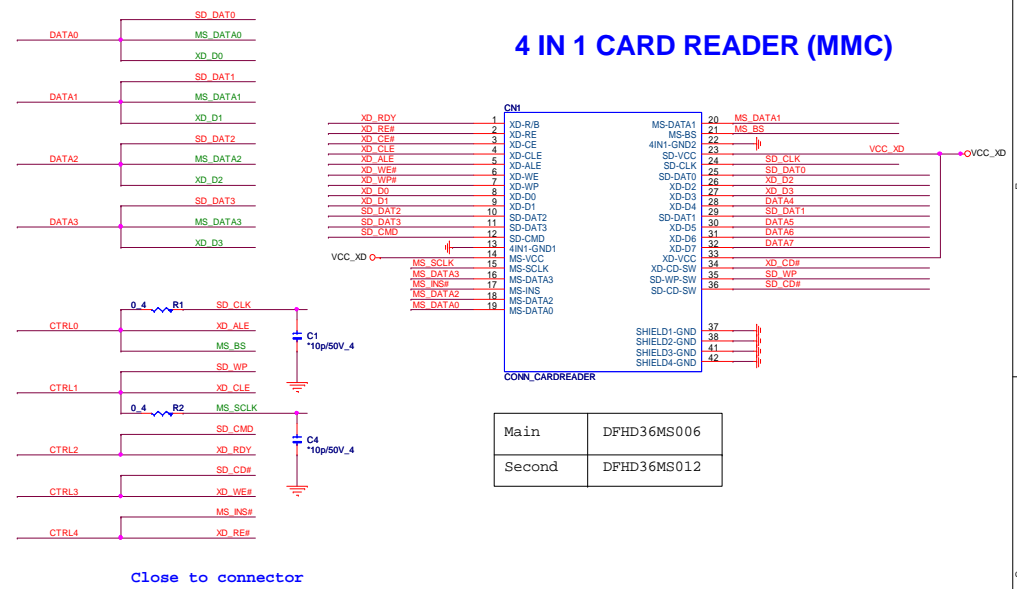
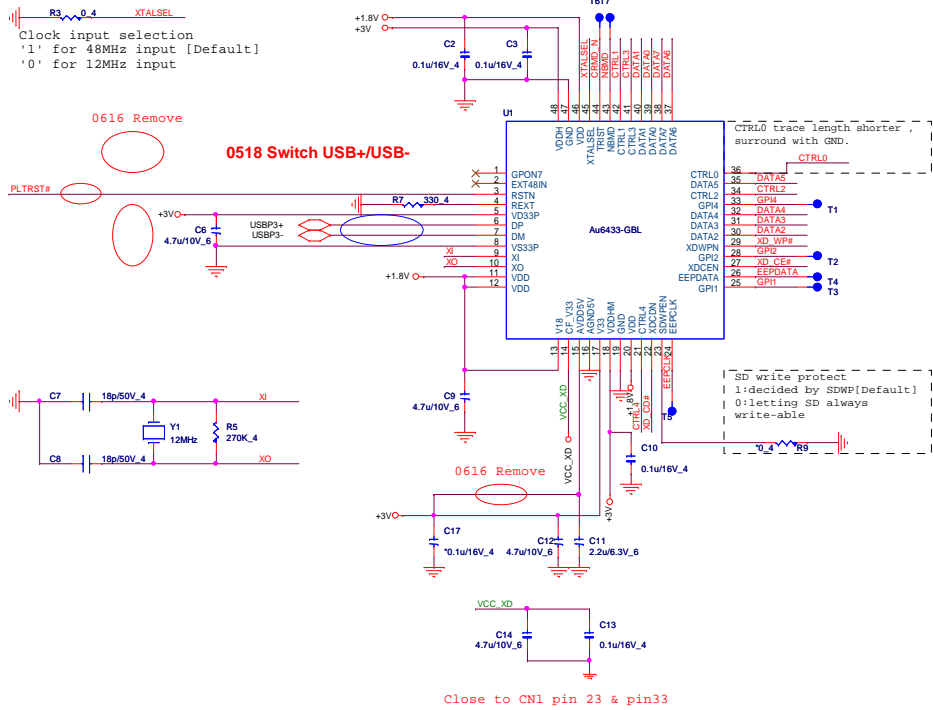
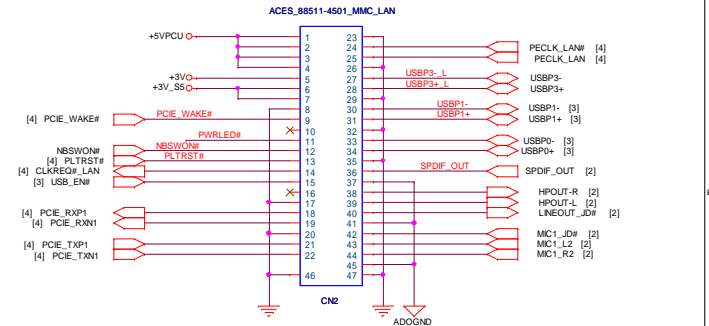


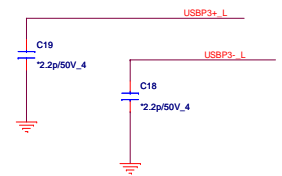
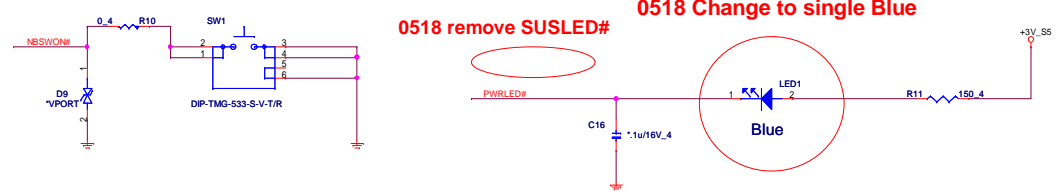
AU6433-GBL (MMC)



D/B to M/B CONN



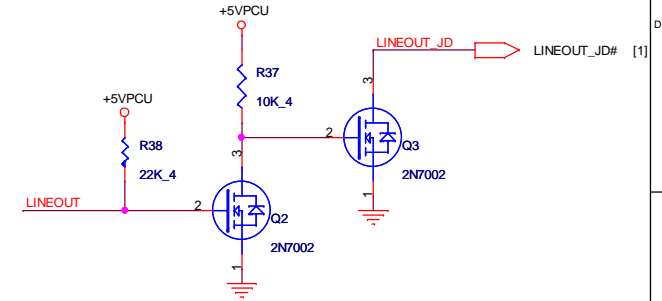
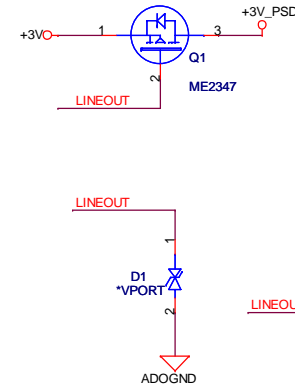
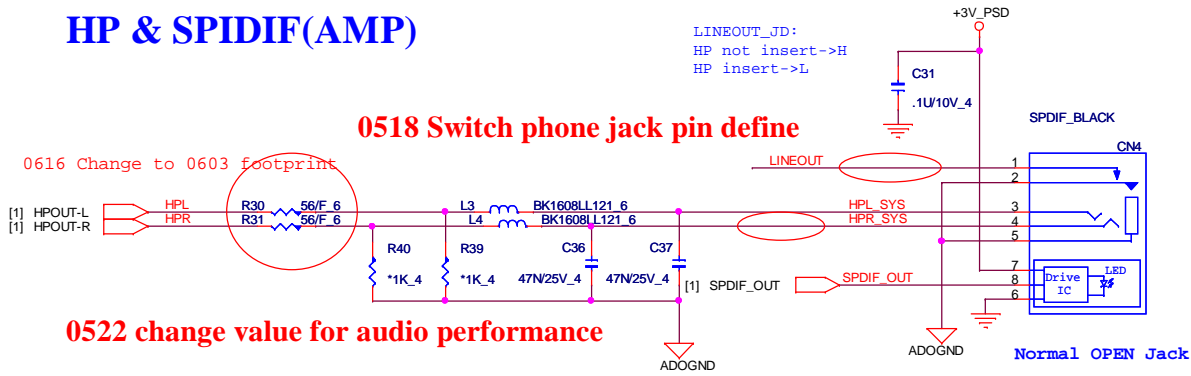
Power Button (UIF)



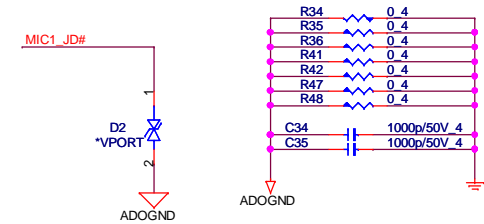
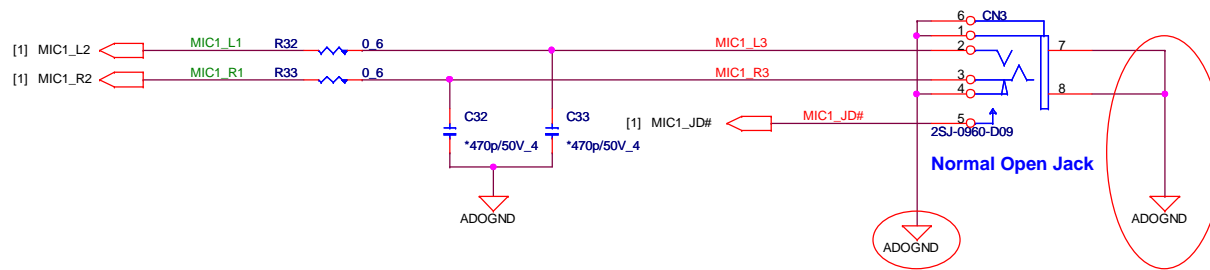
HP & SPDIF(AMP)

0518 Switch phone jack pin define

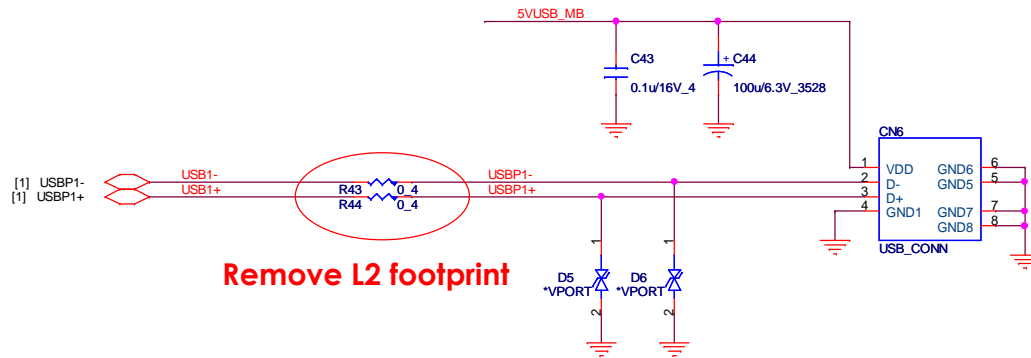
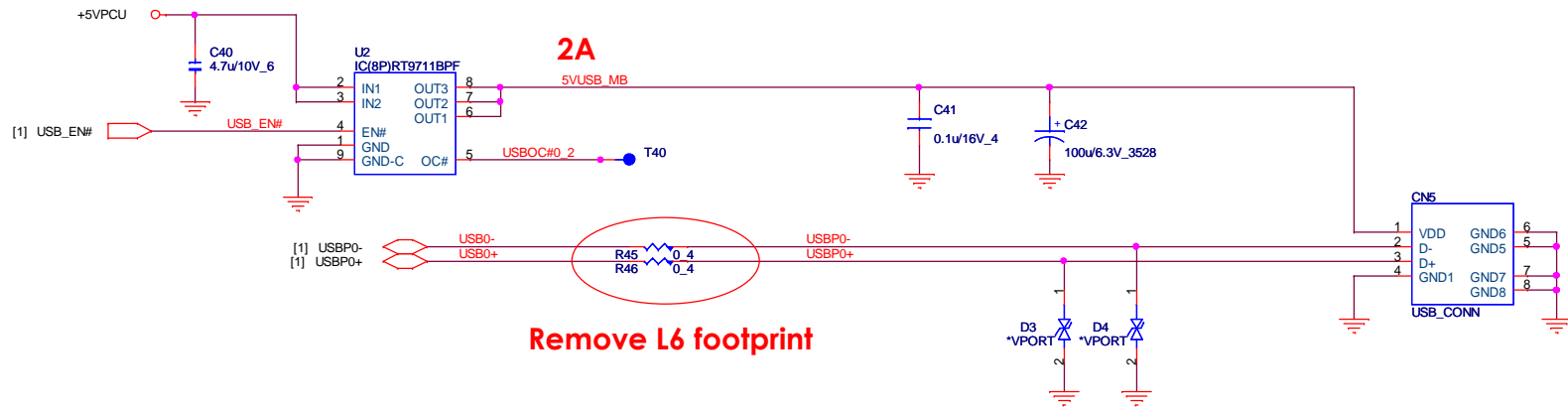
0616 Change to 0603 footprint



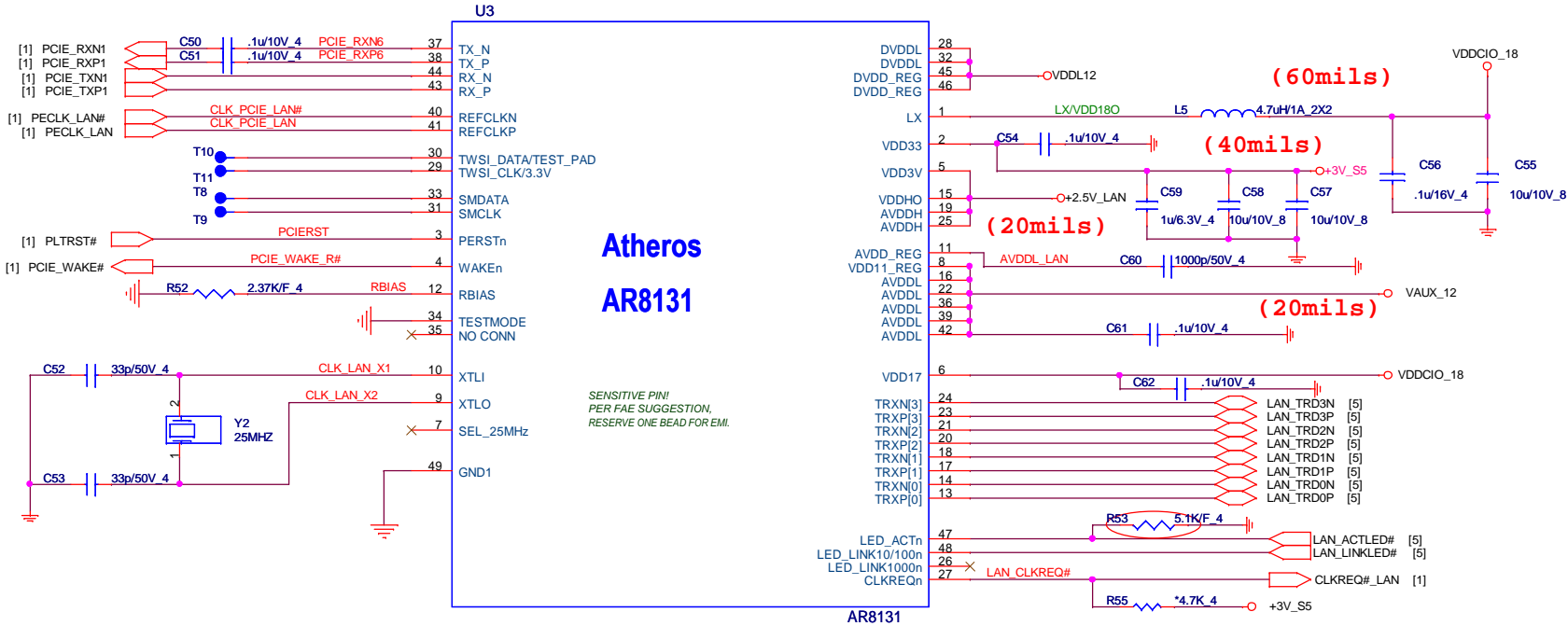
MIC_Pink(AMP)



USB port (USB)



LAN Controller

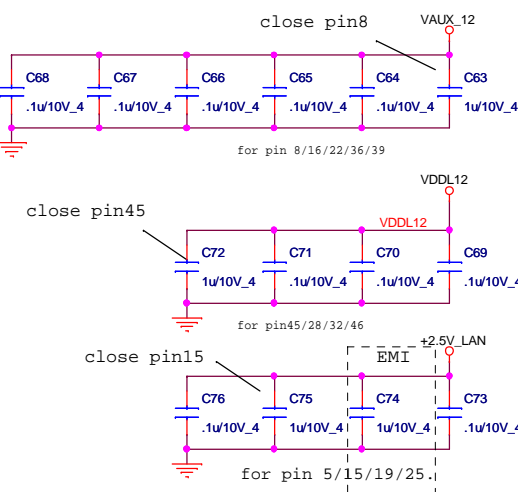


Atheros
AR8131

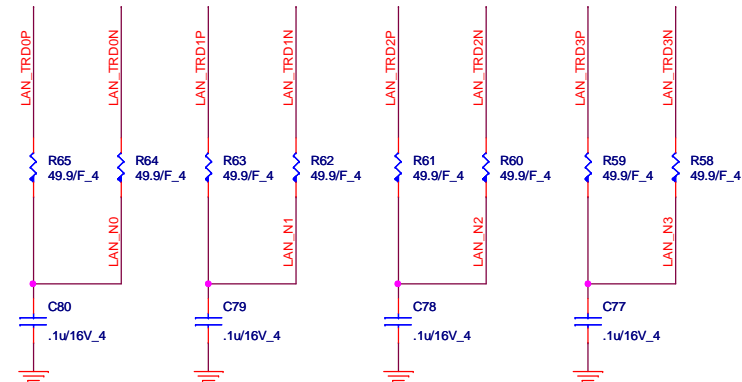
SENSITIVE PIN!
PER FAE SUGGESTION,
RESERVE ONE BEAD FOR EMI.

0518 Change footprint to 0402


Decoupling CAP



PLACE NEAR IC SIDE



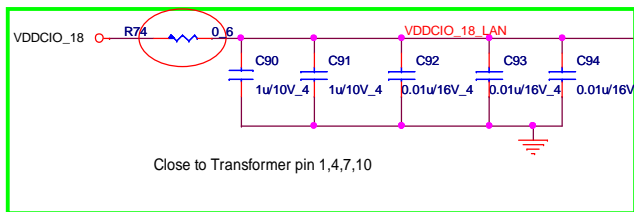
EEPROM



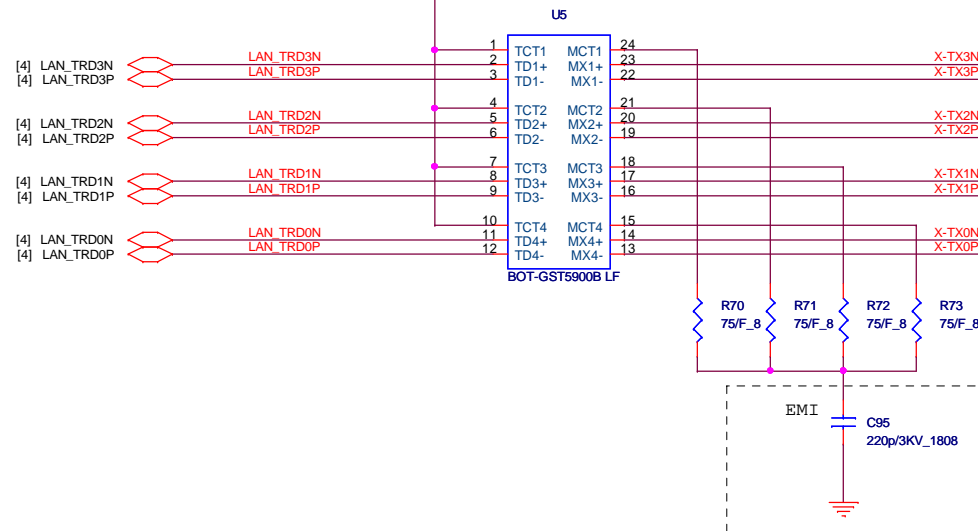
Quanta Computer Inc.
PROJECT : ZH7

Size	Document Number	Rev
	AR8131 GLAN	1A
Date:	Saturday, June 27, 2009	Sheet 4 of 6

For EMI change to bead

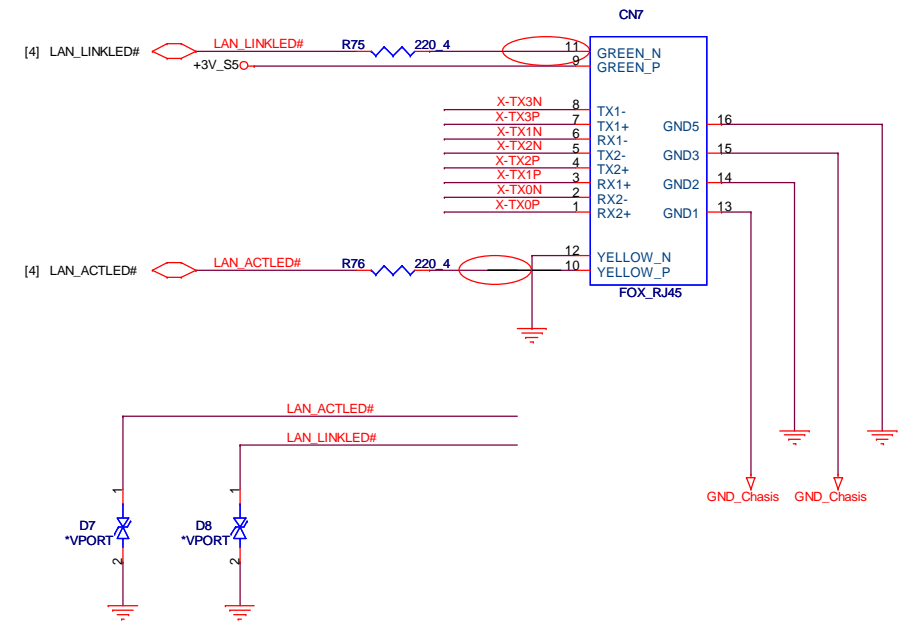


TRANSFORMER

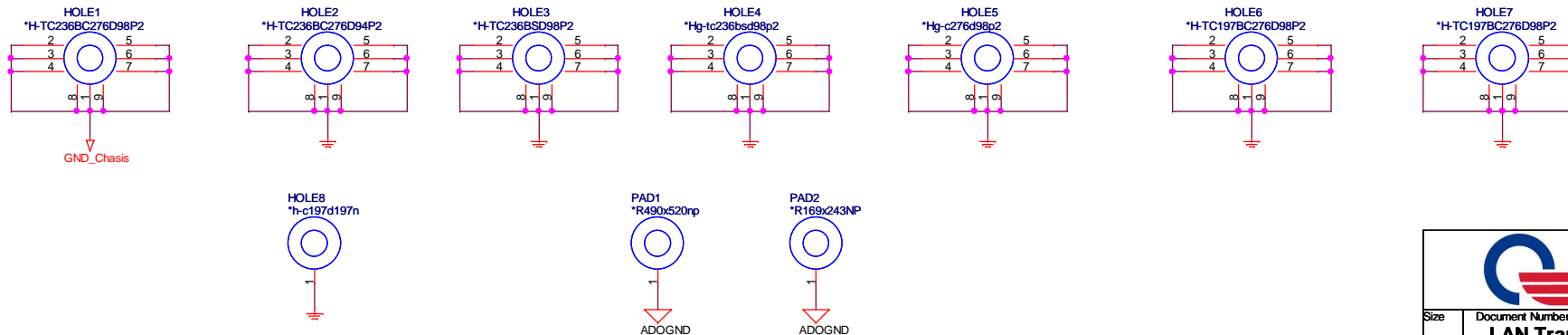


0518 Change RJ45 CONN pin define

RJ45



HOLE



Quanta Computer Inc.

PROJECT : ZH7

Size	Document Number	Rev
	LAN Transformer and RJ45	1A
Date:	Saturday, June 27, 2009	Sheet 5 of 6

Model	REV	DATE	CHANGE LIST	NOTE
ZH7	1A		FIRST RELEASED: (PCB:A)	
	1B		Page1 : Switch USBP3-_CHIP/USBP3+_CHIP for Cardreader controller(U1) Page1 : Remove EXT48Mhz pin for EMI issue and use 12Mhz input for U1(Y1/R3 mount) Page1 : Switch USBP3-_CHIP/USBP3+_CHIP for Cardreader controller(U1) Page1 : Change LED1 to single blue light for Acer request Page2 : Switch phone pin define (pin1 & pin5)with SPDIF function Page2 : Switch phone pin define (pin2 & pin4)with headphone function Page3 : Remove L6/L2 footprint Page4 : Change R53 footprint to 0402 Page5 : Switch RJ-45 pin define (pin10 & pin11)LAN LED function	
	1C			